

South Eastern Utah

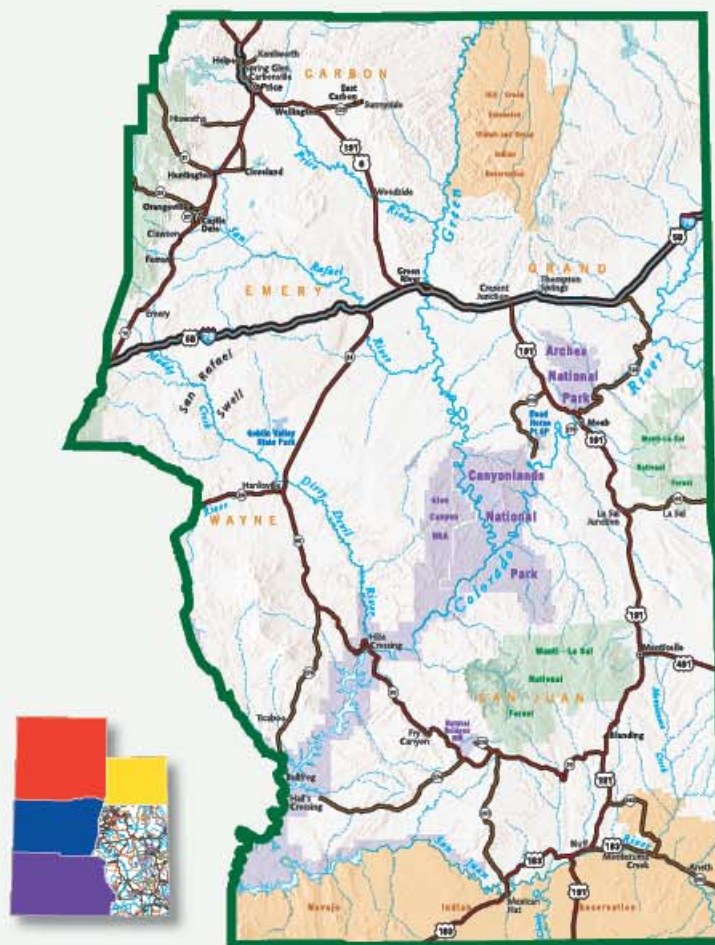


Sand Dune Arch, Larry Hansen

The breathtaking scenery in South Eastern Utah is truly something to talk about. Sandstone arches, colorful hoodoo's, red rock buttes and rapid whitewater are only a few of the magnificent surroundings you'll find in this area. For thousands of years only two groups of people knew about the natural wonders of this region: the Anasazi and Fremont Indians. They added their own personal touch with their granaries, petroglyphs and dwellings. Visitors can see these historical ruins in Nine Mile Canyon and the San Rafael Swell. Monument Valley's desert, found on the southern border of Utah, is one of beauty and serenity. It has been the natural backdrop for more Western movies than any other site in the United States. South Eastern Utah offers an array of outdoor activities including mountain biking the slickrock bike trails, rafting the Colorado and Green Rivers, four-wheeling in Moab, and hiking and camping in the backcountry.

ARCHES NATIONAL PARK

More than 2,000 natural stone arches as well as towering spires, abstract pinnacles, pedestals and other unusual rock formations can be seen here. A 48-mile round-trip paved road weaves through many of these spectacular sights. Parking areas are situated at overlooks and hiking trails vary in length from a few



© 2010 BENCHMARK MAPS. USED BY PERMISSION. WWW.BENCHMARKMAPS.COM

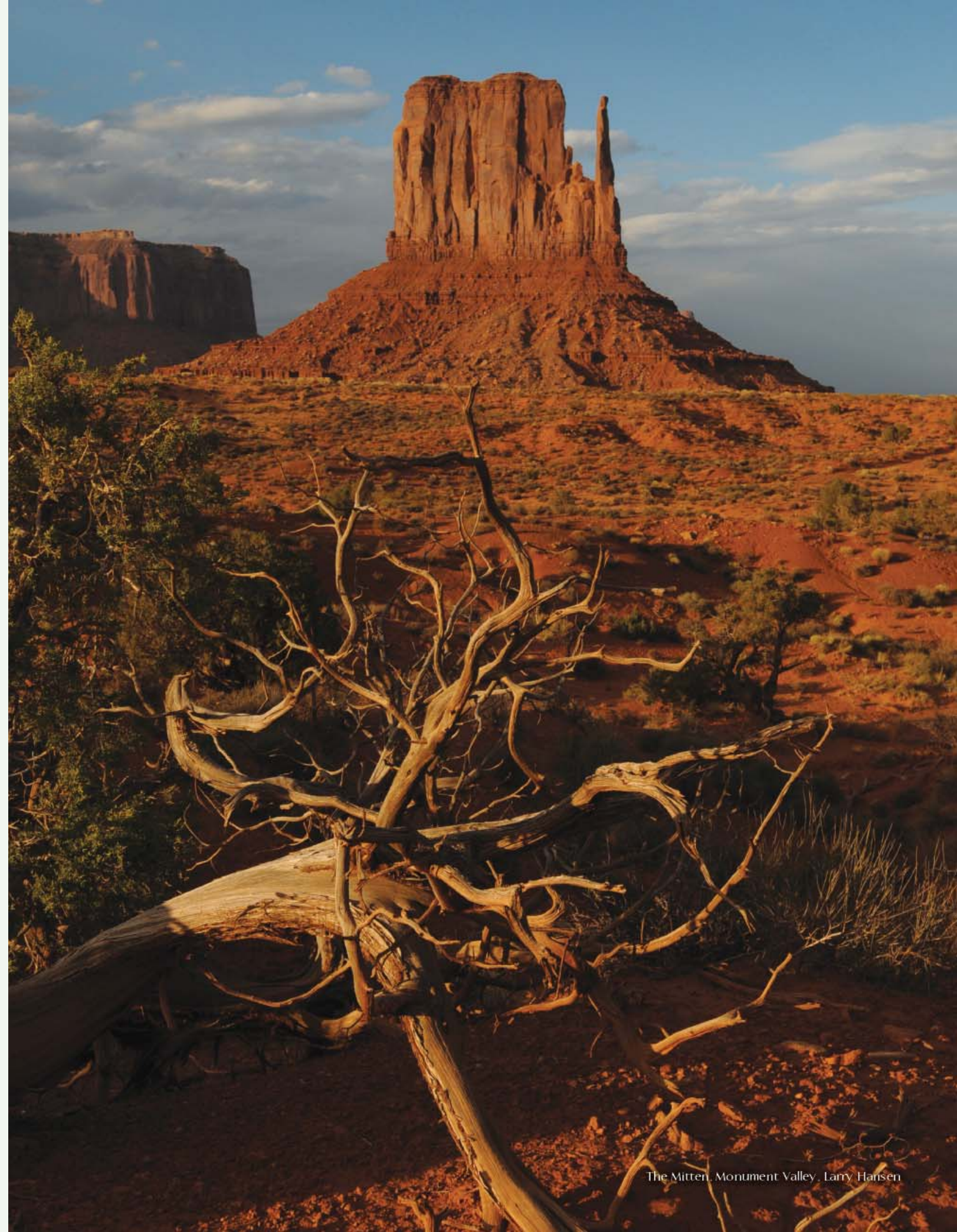
hundred yards to a few miles. Many lead to specific arches, but others lead into the heart of the park. The Olympic torch relay for the 2002 Winter Olympics passed through Delicate Arch, one of Utah's most recognizable symbols located in the park. For more information visit www.nps.gov/arch or call (435) 719-2299. Park entrance is located on Highway 191.

CANYONLANDS NATIONAL PARK

This area began to form over 300 million years ago when the Colorado and Green Rivers carved their way through the sandstone and rock. This erosion created canyons nearly 1,500 feet deep and eventually caused the two rivers to meet, forming Cataract Canyon, one of the wildest canyons for river rafters in the U.S. Visit the areas three districts: Island in the Sky, the Needles and the Maze. Activities in Canyonlands National Park include sightseeing, hiking, camping, mountain biking, river rafting and rock climbing. For more information on guides, trails and campsites visit www.nps.gov/cany or call (435) 719-2313. The park entrance is on Highway 211, west of Monticello.

CLEVELAND-LLOYD DINOSAUR QUARRY

Enjoy interpretive displays offering the most recent scientific research on this puzzling deposit of dinosaur bones. The upper observation



The Mitten, Monument Valley, Larry Hansen

platforms allow you to see the densest concentration of Jurassic-aged dinosaur bones in the world. Practice your paleontological skills with friendly and knowledgeable staff eager to help you explore this area. Picnic areas and walking trails allow for more adventure. For information visit www.utah.com/playgrounds/cleveland_loyd.htm or call (435) 636 3600.

DIXIE NATIONAL FOREST

The forest occupies almost two million acres and stretches for about 170 miles across southern Utah. The largest National Forest in Utah, it straddles the divide between the Great Basin and the Colorado River. Elevations vary from 2,800 ft near St. George to 11,322 ft at Blue Bell Knoll on Boulder Mountain.

The Forest is divided into four geographic areas. High altitude forests in gently rolling hills characterize the Markagunt, Pansaugunt, and Aquarius Plateaus. Boulder Mountain, one of the largest high-elevation plateaus in the United States, is dotted with hundreds of small lakes 10,000 to 11,000 ft above sea level. For more information visit <http://www.fs.fed.us/r4/dixie/index.shtml>.

FOUR CORNERS MONUMENT

This is part of the Navajo Reservation and the only place in the United States where four states intersect at one point: Arizona, Colorado, New Mexico and Utah. In 1912 a cement pad was placed to mark the meeting of these states, but has since been updated to granite and brass. In the Demonstration Center, Navajo vendors sell handmade jewelry, crafts and traditional foods. The visitor center is open year-round. No water is available at the park. Call the San Juan County Travel Region at (800) 574-4386 for more information. The monument is located off Highway 160.

HOVENWEEP NATIONAL MONUMENT

Six prehistoric, Puebloan-era villages are spread over a twenty-mile expanse of mesa tops and canyons along the Utah-Colorado border. Multi-storied towers perched on canyon rims and balanced on boulders lead visitors to marvel at the skill and motivation of their builders. Hovenweep is noted for its solitude and undeveloped, natural character. The name "Hovenweep" is a Paiute/Ute word meaning "Deserted Valley." Visit <http://www.nps.gov/hove/index.htm> or call (970) 562 4282.



Island in the Sky, Canyonlands National Park, Larry Hansen



Full Service in Downtown Moab
Brand New Rooms
On Millcreek Parkway
182 S. Main St., Moab, Utah 84532
(435) 259-7141
www.ramadainmoab.com



SORREL RIVER RANCH
resort & spa
HC 64 Box 4002, Hwy 128 Mile 17
Moab, UT 84532
"The Best Kept Secret in the Southwest"
Luxury Lodging, Fine Dining, Spa
(877) 359-2715
www.sorrelriver.com

THE RIVER CANYON LODGE

Downtown Moab
An Extended Stay Inn and Suites
Suite Amenities for the Price of a Room
Refrigerator and Microwave in all rooms
71 W. 200 North, Moab, Utah 84532
(866) 486-6738
www.rivercanyonlodge.com



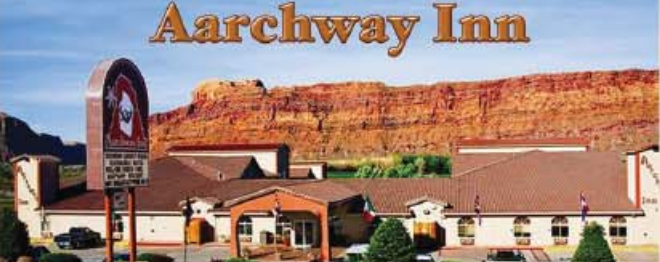
Home of Arches and Canyonlands National Parks
Small Resort Town Hospitality • 2 National Parks
Hiking • Rafting • 4WD Tours • Biking • Galleries



For a free Moab Guide call 800-635-6622 or visit discovermoab.com

800.341.9359
1551 N. Highway 191
Moab, UT 84532
www.aarchwayinn.com

Where Luxury Meets Adventure
Playground
Refrigerator/Microwave
Heated Pool/Hot Tub
Gas Grill/Picnic Tables/Fire Pit
Wireless Internet
Double/Triple Queen Rooms
Complimentary Hot Breakfast
4 Acres of Trailer Parking
Custom Adventure Packages
Your Operator Friendly!



RED CLIFFS LODGE
Moab's Adventure Headquarters

NEW RIVER-FRONT CABINS
RIVER-FRONT ROOMS
VOICE MAIL & WI-FI
PRIVATE PATIOS
HORSEBACK RIDING
BIKES, RAFTS, HIKING
EXERCISE ROOM
TENNIS COURTS
POOL & HOT TUB
CATERING
RESTAURANT & BAR
CONVENTIONS & RETREATS
WEDDINGS & REUNIONS

Wine tasting tours & sales
Castle Creek WINERY
WINNER BEST OF STATE UTAH 2009

Buy local FIRST UTAH
Mile 14 on Hwy. 128
Moab, Utah 84532
435-259-2002 • 866-812-2002
www.redcliffslodge.com

"Moab's Best Deal"

REDSTONE INN

535 South Main
Moab, Utah 84532
435-259-3500
800-772-1972

Pet Friendly & Bike Friendly!

- ★ 52 Rooms
- ★ Pet Rooms
- ★ Kitchenettes
- ★ Picnic & BBQ Patio
- ★ DSL Room Hookup
- ★ Close to Downtown
- ★ Cable TV & HBO
- ★ Hot Tub

www.moabredstone.com

"Southwest Lodge at a Motel Price"

BIG HORN LODGE

550 South Main
Moab, Utah 84532
800-325-6171
435-259-6171

- Heated pool
- Pet rooms
- Close to Downtown
- Voice mail & DSL
- Log furniture/58 Rooms
- Coffee makers with coffee
- Refrigerators, microwaves
- Oversize TV with HBO
- On site Restaurant

www.moabblhorn.com

MOTHER NATURE
Paints a Pretty Picture in
Utah's Castle Country

For information about
Utah's Castle Country
castlecountry.com
435-636-3701
800-842-0789

MONUMENT VALLEY

Monument Valley extends across the Navajo Indian Reservation. Colorful red buttes and spires rise hundreds of feet in the air, providing a quintessential landscape of the American West. The desert's unique rock formations may seem familiar because Hollywood has used the area countless times for western films. Located nearby is the small town of Goulding, established in 1923 as a trading post. Visit www.utah.com/playgrounds/monument-valley.htm for more information. Call (435) 727-5870 for the visitor center.

NATURAL BRIDGES NATIONAL MONUMENT

This area showcases some of the finest examples of natural stone architecture in the southwest. On a tree-covered mesa next to deep sandstone canyons, three natural bridges formed when meandering streams slowly cut through the canyon walls. In honor of the Native Americans that made this area their home, the bridges are named "Kachina," "Owachomo" and "Sipapu." The nine-mile paved scenic

drive is open year-round and provides access to all the bridges. Each may be viewed by walking a short distance to an overlook. Visit www.nps.gov/nabr or call (435) 692 1234 for information.

NINE-MILE CANYON

The canyon is actually about 50 miles long and truly one of the West's ancient treasures. Filled with over 1,000 sites of rock-art, granaries and ruins, this canyon highlights the Fremont and Ute Indian culture. Large panels of rock art can be found just a few feet from the road. Visitors can take long or short hikes in the area and enjoy the wonders of the canyon. Be sure to take plenty of water. Visit www.castlecountry.com or call (435) 636-3701 for more information.

RAINBOW BRIDGE NATIONAL MONUMENT

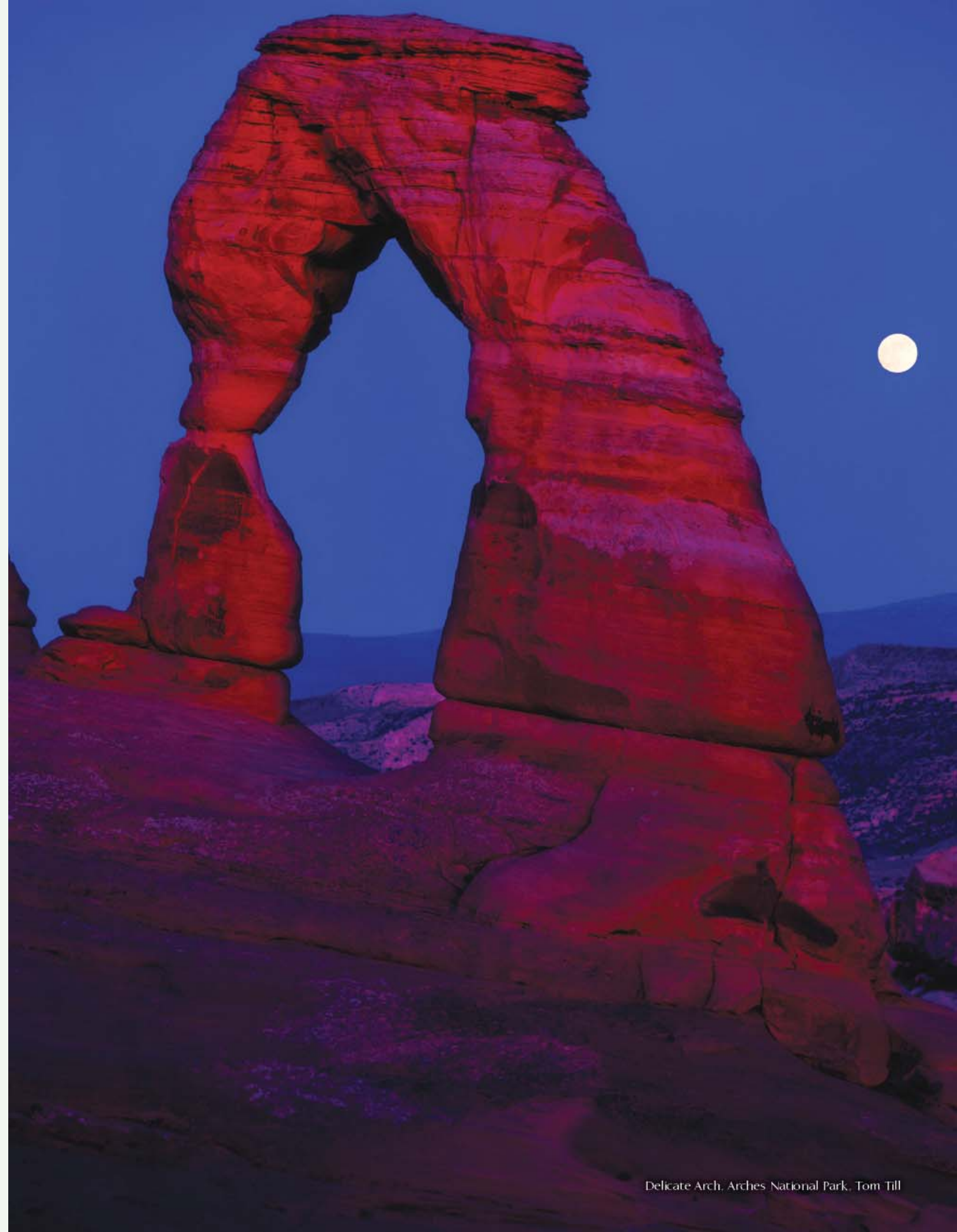
This is the world's largest known natural bridge. With a span of 275-ft, Rainbow Bridge arches to a height of 290 ft. The top is 42 ft thick and 33 ft wide. The Paiute and Navajo tribes consider the bridge a sacred place and named it Nonnezoshe which means "rainbow turned to stone". Tour boats leave daily from Halls Crossing and Bullfrog Marina near Page, AZ. Rainbow Bridge can also be reached by foot or horseback from the Navajo Nation, which requires a permit. Visit www.nps.gov/rabr or call (928) 608-6404 for more information.

SLICKROCK BIKE TRAIL

This is the most popular mountain bike trail in the world, boasting over 100,000 visitors per year. The word "slickrock" was derived from early settlers whose metal-shod horses found the stretch of barren rock slick to cross. Mountain bikers find just the opposite as the sandstone is as "slick" as coarse sandpaper, and they can maneuver their bikes in unusual positions. The trail is only 12 miles long but bikers should allow four hours to ride the entire loop. Although challenging and highly technical, there is a two-mile Practice Loop for first time "rockers." Carry more water than usual, as dry temperatures are typical. Visit www.utahmountainbiking.com/trails for more information. The trail is located near Moab.

THE SAN RAFAEL SWELL

This is an area of layered rocks, mesas, cliffs, buttes, springs and slot canyons. Most of this area is open to the public and adventures are left only to the visitor's imagination. This expansive area includes a rare outdoor museum of geology, archeology and modern-day history. For years visitors have found this area ideal for exploring, camping, ATV-riding, hiking, horseback riding and more. Visit www.sanrafaelwell.org or call (435) 637-3009 for more information or backcountry permits. The Swell is located off Highway 10 just outside Castle Dale.



BLANDING



FOUR CORNERS INN
131 East Center on Highway 191
(435) 678-3257
(800) 574-3150
www.fourcornersinn.com



ABAJO HAVEN GUEST RANCH 5440 North Cedar Edge Lane (435) 979-3126
BEST WESTERN GATEWAY INN 88 East Center Street (435) 678-2278
BLANDING SUNSET INN 88 West Center Street (435) 678-3323
CADILLAC RANCH RV PARK 640 East Main Street (435) 672-2262
CLIFF PALACE MOTEL 132 South Main Street (435) 678-2264
COMFORT INN 711 South Main Street (435) 678-3271
COTTONWOOD CABINS & RV PARK 4th West Main Street (435) 672-2287
DECKER HOUSE INN 189 North 3rd East (435) 672-2304
PROSPECTOR MOTOR LODGE 591 South Main Street (435) 678-3231
SUPER 8 - BLANDING 755 South Main Street (435) 678-3880

BLUFF

CALF CANYON INN BED & BREAKFAST 7th East Street at Black Locust Avenue (435) 672-2470
DESERT ROSE INN 701 West Main Street (435) 672-2303
FAR OUT EXPEDITIONS GUEST HOUSE Corner of 7th and Mulberry (435) 672-2294
KOKOPELLI INN Highway 191 (435) 672-2322
MOKEE MOTEL 511 West Main Street (435) 672-2242
RECAPTURE LODGE 220 East Main Street (435) 672-2251

CASTLE DALE

SAN RAFAEL BED & BREAKFAST VILLAGE INN 15 East 100 North (435) 381-5689
375 East Main Street (435) 381-2309

CORTEZ

WILD HORSE ROOST 2430 Lisbon Valley Road (970) 739-7410

EMERY

CASTLE VALLEY RANCH 1600 North State Road (435) 286-2380

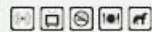
FERRON

GILLY'S INN AND CONVENIENCE STORE CABINS AT JOE'S VALLEY 15 North State Street (435) 384-3333
(435) 564-3235

GREEN RIVER



ROBBERS ROOST MOTEL
325 West Main Street
(435) 564-3452
www.rrmotel.com



BANKURZ HATT BED & BREAKFAST 214 Farrer Street (435) 564-3382
BEST WESTERN RIVER TERRACE 1740 East Main Street (435) 564-3401
BOOK CLIFF LODGE & RESTAURANT 395 East Main Street (435) 564-3406
BUDGET INN MOTEL 60 East Main Street (435) 564-3441
GREEN RIVER COMFORT INN 1065 East Main Street (435) 564-3300
HOLIDAY INN EXPRESS 965 East Main Street (435) 564-4439
MOTEL 6 - #289 GREEN RIVER 946 East Main Street (435) 564-3436
RAMADA LIMITED 117 East Main Street (435) 564-8441
SLEEPY HOLLOW 94 East Main Street (435) 564-8189
SUPER 8 MOTEL 1248 East Main Street (435) 564-8888
KNIGHTS INN 525 East Main Street (435) 564-3421

HANKSVILLE

BEST VALUE INN MOTEL 280 East 100 North (435) 542-3471
JOY'S BED & BREAKFAST 250 South Center (435) 542-3252
RODEWAY INN CAPITOL REEF 25 EAST HWY 24 (435) 456-9900
WHISPERING SANDS MOTEL 140 South Highway 95 (435) 542-3238

HELPER

HELPER ROADHOUSE 255 South Main Street (435) 472-1017
RIVERSIDE MOTEL 99 North Main Street (435) 472-2006

HUNTINGTON

VILLAGE INN MOTEL 307 South Main Street (435) 687-9888

LA SAL

LA SAL MOUNTAIN GUEST RANCH Highway 46 at mile marker 9 (435) 686-2223
MT. PEALE COUNTRY INN Highway 46 in Old La Sal (435) 686-2284
BED & BREAKFAST

LAKE POWELL

BULLFROG RESORT & MARINA Highway 276 at Bullfrog Marina (435) 684-3000
HALLS CROSSING MARINA FAMILY UNITS Highway 276 at Halls Crossing Marina (435) 684-7000
HITE VILLAGE STORE FAMILY UNITS Highway 95 at Hite Village Store (435) 684-2278

MEXICAN HAT



SAN JUAN INN & TRADING POST
Hwy 163 at the San Juan River bridge
(435) 683-2220
(800) 447-2022
www.sanjuaninn.net



CANYONLANDS MOTEL Highway 163 (435) 683-2230
HAT ROCK INN 120 East Highway 163 (435) 683-2221
MEXICAN HAT LODGE Highway 163 (435) 683-2222
VALLEY OF THE GODS BED & BREAKFAST East of Hwy 261 on Valley of the Gods Road (970) 749-1164

MOAB



AARCHWAY INN
1551 North Highway 191
(435) 259-2599
(800) 341-9359
www.aarchwayinn.com



BEST WESTERN CANYONLANDS INN
16 South Main Street
(435) 259-2300
(800) 649-5191
www.canyonlandsinn.com



BOWEN MOTEL
169 North Main Street
(435) 259-7132
(800) 874-5439
www.bowenmotel.com



RED CLIFFS ADVENTURE LODGE
Highway 128 at mile marker 14
(435) 259-2002
(866) 812-2002
www.redcliffslodge.com



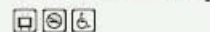
SORREL RIVER RANCH RESORT & SPA
Hwy 128 at mile marker 17
(435) 259-4642
(877) 359-2715
www.sorrelriver.com



SUNFLOWER HILL LUXURY INN
185 North 300 East
(435) 259-2974
(800) MOAB-SUN (662-2766)
www.sunflowerhill.com



VIRGINIAN MOTEL
70 East 200 South
(435) 259-5951
(800) 261-2063
www.moab-utah.com/virginian



ACCOMMODATIONS UNLIMITED MOAB 9 North Main Street (435) 259-6575
ADVENTURE INN 512 North Main Street (435) 259-6122
APACHE MOTEL 166 South 400 East (435) 259-5727
ARCHVIEW CAMPGROUND & RESORT North Highway 191 at Highway 313 (435) 259-7854
AUM, LLC 3340 East Fairway Loop (435) 259-6575
BASE CAMP ADVENTURE LODGE Over Hurrah Pass on Colorado River (435) 260-1783
BEST WESTERN GREENWELL INN 105 South Main Street (435) 259-6151
BIG HORN LODGE 550 South Main Street (435) 259-6171

CALI COCHITTA BED & BREAKFAST
CASTLE VALLEY INN
CEDAR BEND BED & BREAKFAST
COMFORT SUITES MOAB
COYOTE RUN REDROCK RANCH HOUSE RENTAL
110 South 200 East
HC64 2602 - 424 Amber Lane
La Sal Mt Loop Rd - 15 mi from Ker's Lake
800 South Main Street

2845 South Eastbench Road #4
1411 South Arnell Lane
426 North Main Street
123 West 200 North
1989 South Desert Hills Lane
3407 East La Camino Drive
191 South 200 East
140 South 200 East
100 West 200 South
549 Jefferson Street
1515 North Highway 191
570 North Main Street
1075 South Highway 191
72 South 100 East
815 South Main Street
La Sal Mountains 8 miles southeast of Moab
1213 South Highway 191
Mill Creek Canyon
505 Rose Tree Lane
38 East 200 North
376 North 100 West
3393 East La Camino Drive
3225 South Highway 191
50 East Center Street

3686 Spanish Valley Drive
1266 South Boulder Avenue
1900 South Highway 191
120 East 100 South
1051 South Main Street
1266 North Highway 191
37 East Center Street
711 South Main Street
5501 South Highway 191
1089 North Main Street
543 Nichols Lane
6725 North Highway 191
168 East Center Street
182 South Main Street
2711 Old City Park Road
51 North 100 West
Fairway loop of Moab Golf Course
535 South Main Street
71 West 200 North
988 North Main Street
168 North Main Street
840 South Main Street
1051 South Main
1301-1/2 North Highway 191
889 North Main Highway 191
3686 South Spanish Dr. #5-1
549 Jefferson Street
81 East 100 South

MONTICELLO



INN AT THE CANYONS
533 North Main Street
(435) 587-2458
www.monticellocanyonlandsinn.com

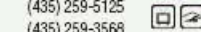


BAR-TN BED & BREAKFAST South of Monticello on South Highway 191
BEST WESTERN WAYSIDE INN 197 East Central
CANYONLANDS MOTOR INN 197 North Main Street
NAVAJO TRAIL NATIONAL 9 MOTEL 248 North Main Street
RODEWAY INN & SUITES 649 North Main Street
RUNNIN IRON HOTEL 7980 North Highway 191
THE MONTICELLO INN 164 East Highway 666

MONUMENT VALLEY



GOULDING'S LODGE & TOURS
1 mile east of Highway 163
(435) 727-3231
(800) 874-0902
www.gouldings.com



FIRETREE BED & BREAKFAST 1 FireTree Lane (435) 727-3228
THE VIEW HOTEL Monument Valley Tribal Park (435) 727-5555

NATURAL BRIDGES

FRY CANYON LODGE Mile marker 71 on Highway 95 (435) 259-5334

ORANGEVILLE

CASTLE VALLEY OUTDOORS 1600 North Highway 10 (435) 749-0508

PRICE



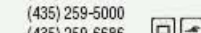
BEST WESTERN CARRIAGE HOUSE INN
590 East Main Street
(435) 637-5660
www.bestwestern.com



HOLIDAY INN HOTEL & SUITES
838 Westwood Boulevard
(435) 637-8880
(800) HOLIDAY
www.hipriohotel.com



LEGACY INN & RV PARK
145 North Carbonville Rd.
(435) 637-2424
www.legacynn Utah.com



SUPER 8 - PRICE
180 North Hospital Drive
(435) 637-8088
www.super8.com

GREENWELL INN & CONVENTION CENTER 655 East Main (Exit 243) (435) 637-3520
TAVAPUTS RANCH 55 miles east of Price (435) 637-1236

TICABOO

TICABOO RESORT & RV PARK Highway 276, Box 2110-T (435) 788-2110

WELLINGTON



NATIONAL 9 WELLINGTON
50 South 700 East
(435) 637-7980
www.national9wellington.com



NINE MILE RANCH 25 miles northeast of Wellington (435) 637-2572
PILLOW TALK MOTEL 430 East Main Street (435) 637-7706

Did You Know?

Utah has 11,000 miles of fishing streams and 147,000 acres of lakes and reservoirs.

What to Expect

Geography: With some of the finest landscapes in the west, Utah's defining characteristic is its variety of terrain. From mountains and forests to desert and rocks, Utah has a diverse selection of breathtaking scenery. Experience alpine peaks in the northeast, the vast desert of the Great Basin and the stunning red rock canyons, buttes and mesas of the southern regions - not to mention miles of pristine lakes and rivers throughout the state.



South Eastern Region Restaurants

RESTAURANTS

GREEN RIVER

RAY'S TAVERN 25 SOUTH BROADWAY (435) 564 8268

HELPER

CARBON COUNTRY CLUB 3055 NORTH HWY 6 (435) 637 5960

MOAB



ZAX RESTAURANT

96 S Main
(435) 259-6555
Open 7 days a week -
6:30AM to Close

Hours vary during Winter Season.

BROKEN OAR RESTAURANT	53 WEST 400 NORTH	(435) 259 3127
CASTLE CREEK WINERY AT RED CLIFFS LODGE	MILE 14 HWY 128	(435) 259 2002
MOAB BREWERY	686 SOUTH MAIN STREET	(435) 259 6333
MOAB DINER	189 SOUTH MAIN STREET	(435) 259 4006
PANCAKE HAUS	196 SOUTH MAIN STREET	(435) 259 7141
RED CLIFFS LODGE RESTAURANT	MILE 14 HWY 128	(435) 259 2002
SORREL RIVER GRILL	SCENIC BYWAY 128 AT MILE MARKER 17	(435) 259 4642
SUNSET GRILL	900 NORTH HWY 191	(435) 259 7146
THE BRANDING IRON	2971 SOUTH HWY 191	(435) 259 6275

PRICE



JB'S OF PRICE

111 North Gopher Blvd.
(435) 637 1840
Breakfast - Lunch - Dinner

Now at NEW Location.

CASTLE RANCH STEAKHOUSE	838 WESTWOOD BLVD	(435) 637 8880
TY'S RESTAURANT	715 EAST MAIN	(435) 636 3463

Courtesy of Artisan Grille, Ogden



Courtesy of JB's of Price



Hovenweep National Monument, Larry Hansen

Biking the Slickrock Trail, Moab

